



FREESTANDING OFFICE BUILDING

LEASE OVERVIEW

LEASE PRICE | \$18 PER SF

SQUARE FEET | 7,910 +/- SF

LEASE TYPE | NNN

POTENTIAL USE | PROFESSIONAL OFFICE

PARCEL ID | 00039776

ZONING | OFFICE SERVICES

Professional two-story freestanding office building located in the desirable Turnberry Wood Office Park is available for lease. The building has a reception area, multiple offices, conference rooms, flex areas, three restrooms, two kitchenettes, and basement. Office furniture is negotiable. Neighboring properties include attorneys, building contractors, First Health of the Carolinas Foundation, medical practices (including Southern Pines Women's Clinic, Henry Orthodontics, Fred Ridge Dental Practice), and Wells Fargo wealth management.

HOLLY BELL
NC BROKER
C: 910.690.1065
HOLLY@BELLMANLEY.COM

BELL MANLEY REAL ESTATE
235 E Pennsylvania Ave.
Southern Pines, NC 28387
910.684.5353
www.bellmanley.com

GEORGE MANLEY
NC BROKER
C: 910.603.8395
GEORGE@BELLMANLEY.COM

PHOTOS



HOLLY BELL
NC BROKER
C: 910.690.1065
HOLLY@BELLMANLEY.COM

BELL MANLEY REAL ESTATE
235 E Pennsylvania Ave.
Southern Pines, NC 28387
910.684.5353
www.bellmanley.com

GEORGE MANLEY
NC BROKER
C: 910.603.8395
GEORGE@BELLMANLEY.COM

PHOTOS



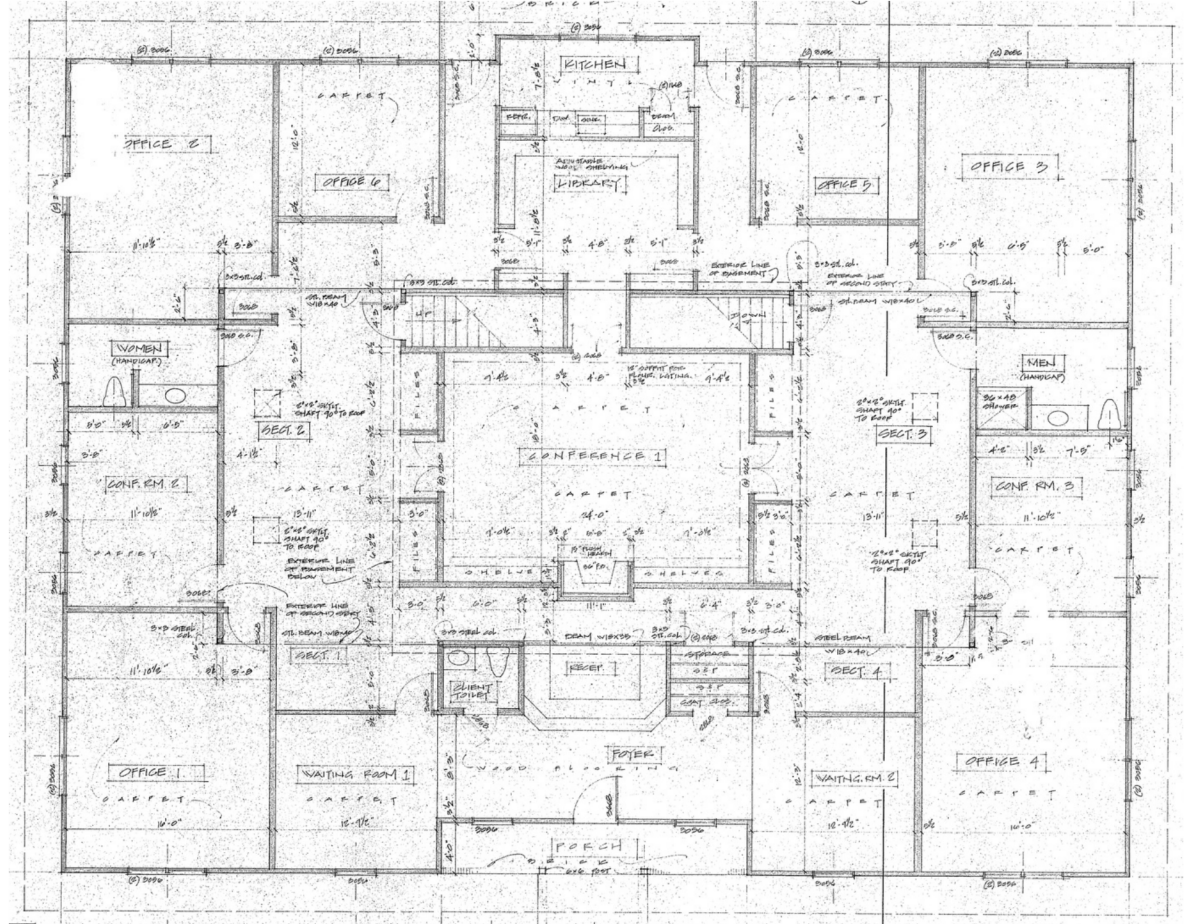
HOLLY BELL
NC BROKER
C: 910.690.1065
HOLLY@BELLMANLEY.COM

BELL MANLEY REAL ESTATE
235 E Pennsylvania Ave.
Southern Pines, NC 28387
910.684.5353
www.bellmanley.com

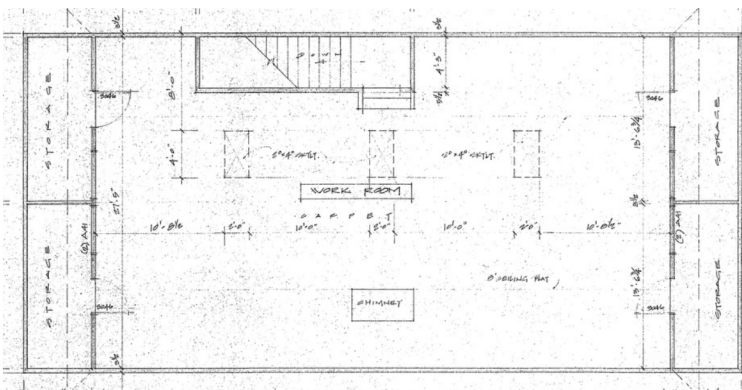
GEORGE MANLEY
NC BROKER
C: 910.603.8395
GEORGE@BELLMANLEY.COM

FLOOR PLAN

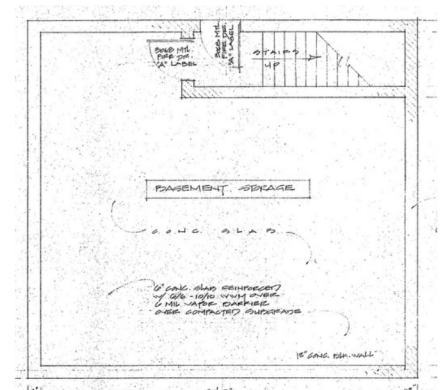
FIRST FLOOR



SECOND FLOOR



BASEMENT



NOTE: Floor plans are from original building plans.
For illustrative purposes only. Actual dimensions & details may vary.

HOLLY BELL
NC BROKER
C: 910.690.1065
HOLLY@BELLMANLEY.COM

BELL MANLEY REAL ESTATE
235 E Pennsylvania Ave.
Southern Pines, NC 28387
910.684.5353
www.bellmanley.com

GEORGE MANLEY
NC BROKER
C: 910.603.8395
GEORGE@BELLMANLEY.COM

AERIAL MAP



HOLLY BELL
NC BROKER
C: 910.690.1065
HOLLY@BELLMANLEY.COM

BELL MANLEY REAL ESTATE
235 E Pennsylvania Ave.
Southern Pines, NC 28387
910.684.5353
www.bellmanley.com

GEORGE MANLEY
NC BROKER
C: 910.603.8395
GEORGE@BELLMANLEY.COM